

SURVEYOR'S ACKNOWLEDGMENT:

It is hereby certified that this plat is true and correct and was prepared from an actual survey of the property made by me or under my supervision; that all monuments shown hereon actually exist or are marked as "Future", and their locations, size, type, and material are correctly shown; and that all engineering requirements of the Kennesaw Subdivision Regulations have been fully complied with.

By Thomas M. Gunn 10/21/85
Registered Georgia Land Surveyor, No. 1549 Date

OWNER'S ACKNOWLEDGMENT:

Filed in office 10-3-85 11:20 AM
Plat Book 123 page 59
Jay C. Stephenson, Clerk

STATE OF GEORGIA,
COUNTY OF COBB,
CITY OF KENNESAW

The owner of the land shown on this plat and whose name is subscribed thereto, and in person or through duly authorized agents, acknowledges that this plat was made from an actual survey and dedicates to the use of the public forever all streets, parks, drains, easements, and public grounds thereon shown, which comprise a total of _____ acres, for the purposes therein expressed.

Subdivider Lloyd D. Nichollland Date 10/21/85

Owner Lloyd D. Nichollland Date 10/21/85

Approved by City Engineer, Kennesaw, Georgia.

City Engineer _____ Date _____

Pursuant to the Land Subdivision Ordinance of the City of Kennesaw, Georgia, all the requirements of approval having been fulfilled, this Final Plat was given final approval by the Kennesaw Planning Commission on _____; and the Kennesaw City Council on _____

Date _____

Chairman, Planning Commission

10-11-85

Date _____
J. O. Stephenson
Mayor, Kennesaw, Georgia

NOTES:
NO N.G.S. MONUMENT FOUND WITHIN 500' OF PROPERTY.
TOTAL NO. OF LOTS: 86
TOTAL AREA: 32.58 AC.
PROPERTY IS ZONED R-2 & R-3
BUILDING LINES: (unless otherwise shown)
R-2 { 35' FRONT 30' REAR 10' SIDE }
R-3 { 35' FRONT 30' REAR 10' SIDE }
MIN. FLOOR AREA: 1200 sq. ft.
No restrictive covenants recorded.

THIS PLAT IS RECORDED IN PLAT BOOK 105, PAGE 26
ON 12-11-79 AT 2:45

Jay C. Stephenson
CLERK COBB CO. SUPERIOR COURT

FINAL PLAT FOR SHILLINGS CHASE

LOCATED IN LAND LOT 203
20TH DISTRICT, 2ND SECTION
COBB COUNTY, GEORGIA
IN THE CITY OF KENNESAW
SCALE: 1 INCH=100 FEET
DATE: OCTOBER 15, 1985

GRAPHIC SCALE (IN FEET)
0 100 200

"F.I.A. Official Flood Hazard Map" Community No. 130052, page 6, dated 1-3-79 shows this property to be in an area having special flood hazards.

SOUTHERN SURVEYING & MAPPING CO., INC.
4076 EBENEZER ROAD N.E.
MARIETTA, GEORGIA 30066
PHONE: 926-7759

LOT AREAS (in sq. ft)					
Lot	Area	Lot	Area	Lot	Area
1	13514	31	12318	61	13010
2	12082	32	14000	62	15600
3	12003	33	15844	63	17688
4	12607	34	19812	64	13024
5	15483	35	15688	65	12003
6	13900	36	12605	66	8400
7	12002	37	12052	67	8400
8	12138	38	12015	68	9044
9	12550	39	12315	69	13353
10	12004	40	12237	70	12010
11	12320	41	12187	71	8400
12	13605	42	12076	72	8400
13	13436	43	13424	73	8527
14	20343	44	15844	74	8079
15	12716	45	9210	75	9625
16	13821	46	8400	76	9400
17	12907	47	8400	77	8400
18	12002	48	8400	78	12601
19	12002	49	8400	79	9001
20	12002	50	9306	80	9278
21	12002	51	20487	81	10095
22	17117	52	13468	82	14517
23	13694	53	16212	83	12392
24	12211	54	14655	84	12109
25	12002	55	18110	85	9699
26	13039	56	12001	86	8115
27	13343	57	18069		
28	12811	58	10670		
29	12605	59	8536		
30	12002	60	16094		

THIS PLAT WAS REVISED SEPTEMBER 29, 1988, TO SHOW A SIGN EASEMENT ON LOT NUMBER 1. THIS REVISION IS RECORDED IN PLAT BOOK _____, PAGE _____, DATE _____

AT _____

CLERK COBB COUNTY SUPERIOR COURT

CLERK COBB COUNTY SUPERIOR COURT

CLERK COBB COUNTY SUPERIOR COURT

CLERK COBB COUNTY SUPERIOR COURT

CLERK COBB COUNTY SUPERIOR COURT

CLERK COBB COUNTY SUPERIOR COURT

CLERK COBB COUNTY SUPERIOR COURT

CLERK COBB COUNTY SUPERIOR COURT

CLERK COBB COUNTY SUPERIOR COURT

CLERK COBB COUNTY SUPERIOR COURT

CLERK COBB COUNTY SUPERIOR COURT

CLERK COBB COUNTY SUPERIOR COURT

CLERK COBB COUNTY SUPERIOR COURT

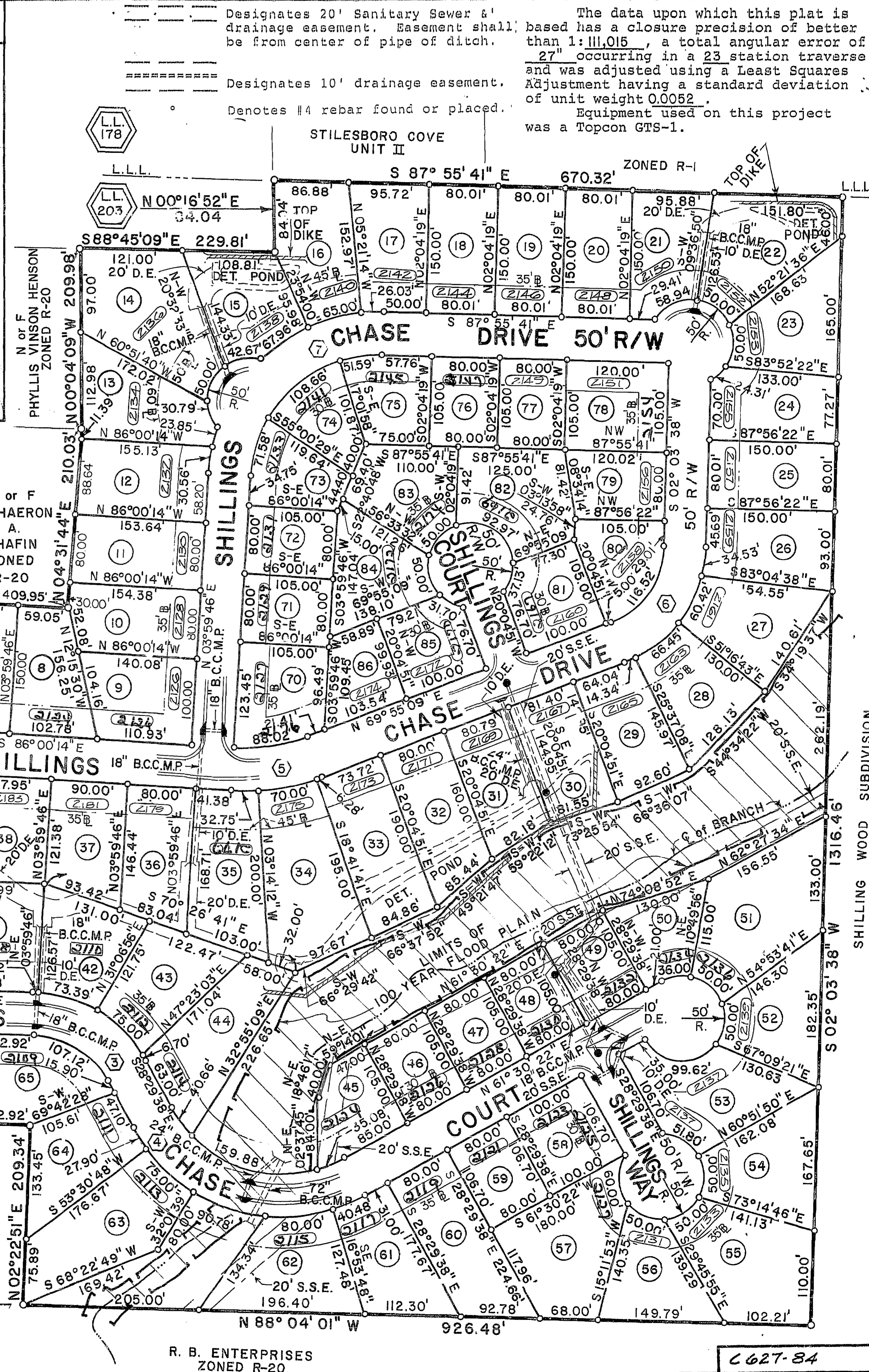
CLERK COBB COUNTY SUPERIOR COURT

CLERK COBB COUNTY SUPERIOR COURT

CLERK COBB COUNTY SUPERIOR COURT

CLERK COBB COUNTY SUPERIOR COURT

CLERK COBB COUNTY SUPERIOR COURT



Designates 20' Sanitary Sewer & drainage easement. Easement shall be from center of pipe of ditch.
Designates 10' drainage easement.
Denotes #4 rebar found or placed.

The data upon which this plat is based has a closure precision of better than 1:111,015, a total angular error of 27" occurring in a 23 station traverse and was adjusted using a Least Squares Adjustment having a standard deviation of unit weight 0.0052.
Equipment used on this project was a Topcon GTS-1.

